



Templeton Road, Wigan, WN2 5PB

£89,950

Located in the heart of Platt Bridge, Wigan, this charming terraced house on Templeton Road presents an excellent opportunity for both investment and resale. Spanning an impressive 1,076 square feet, the property boasts two spacious reception rooms, kitchen, downstairs WC, utility room, three bedrooms, bathroom and loft room.

The prime location of this property enhances its appeal, offering easy access to local amenities, schools, and transport links, making it an ideal choice for those seeking a vibrant community atmosphere. Whether you are looking to invest in a promising property or find a new home, this house on Templeton Road is a remarkable find that should not be overlooked.

This property is a great financial investment. Its potential for resale is promising, and for those considering rental options, the property is likely to yield a high rental return, making it a sound choice for investors.

Call the office on 01254 691352 to arrange a viewing.

Front Reception Room 14'2" x 11'10" (4.34m x 3.61m)



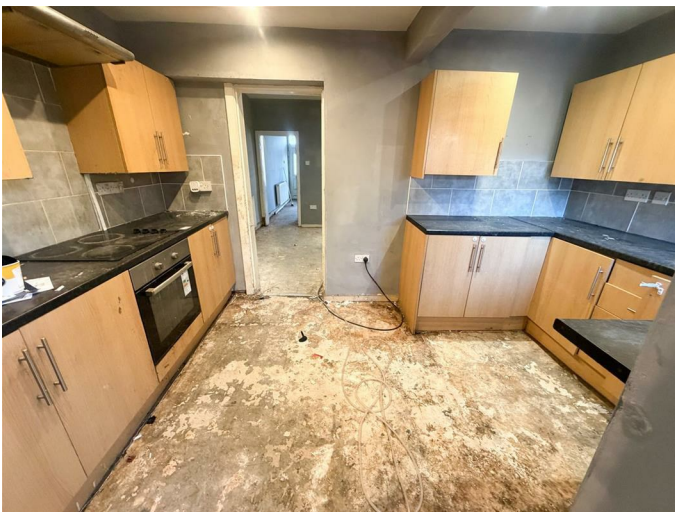
Second Reception Room 14'7" x 11'5" (4.45m x 3.49m)



Bedroom One 7'9" 12'0" (2.38m 3.67m)



Kitchen 12'8" x 8'6" (3.88m x 2.61m)



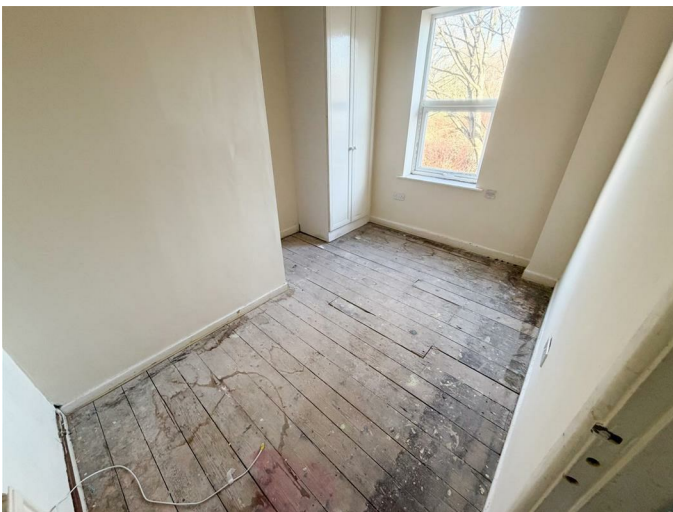
Bedroom Two 6'5" x 8'6" (1.97m x 2.61m)



Bathroom 5'3" x 8'0" (1.61m x 2.45m)



Bedroom Three 8'11" x 11'1" (2.73m x 3.38m)

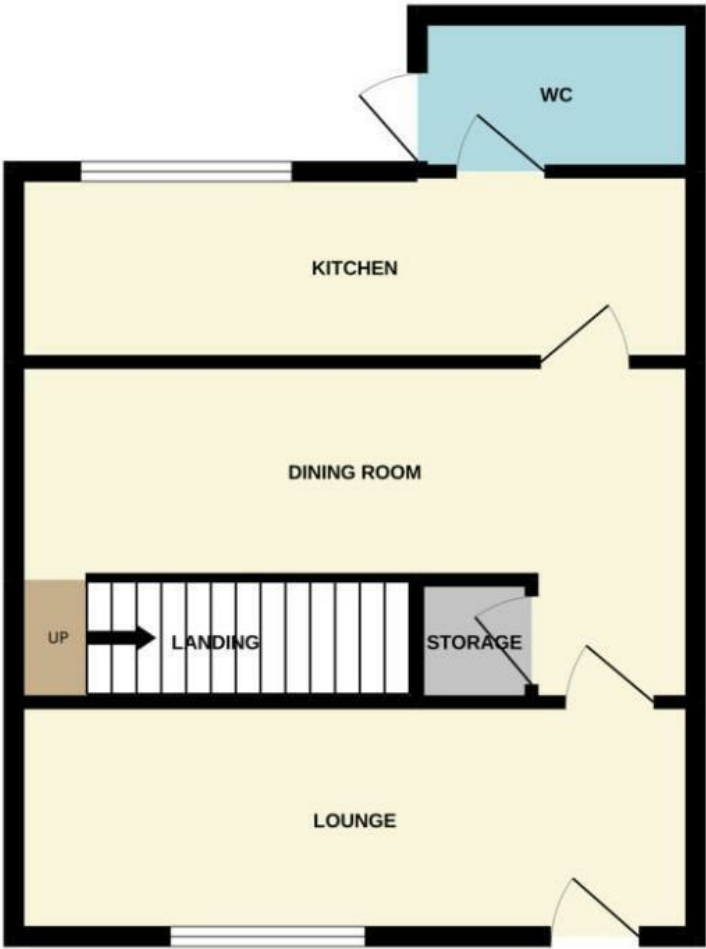


Loft Room 14'2" x 11'1" (4.34m x 3.39m)

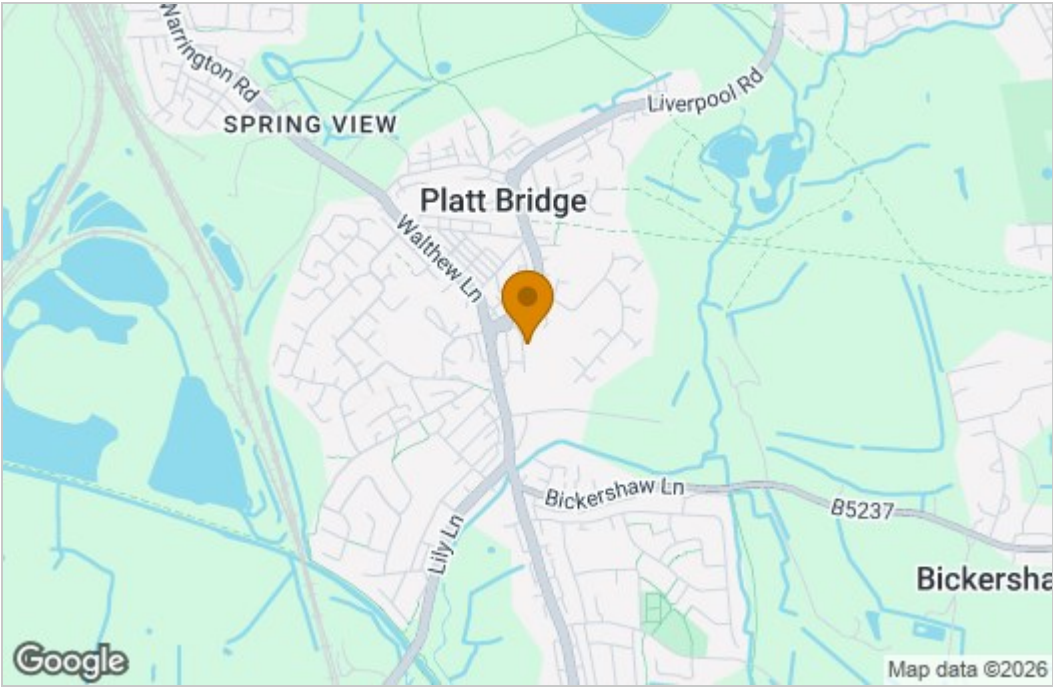


Garden

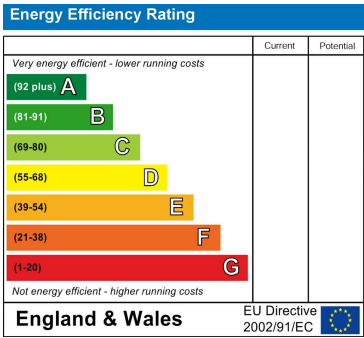
Floor Plan



Area Map



Energy Efficiency Graph



These particulars, whilst believed to be accurate are set out as a general outline only for guidance and do not constitute any part of an offer or contract. Intending purchasers should not rely on them as statements of representation of fact, but must satisfy themselves by inspection or otherwise as to their accuracy. No person in this firms employment has the authority to make or give any representation or warranty in respect of the property.